



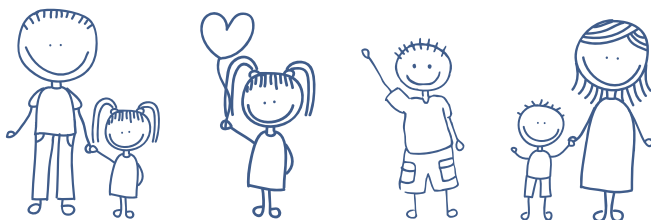
# Amity Health KIDS HUB



Thursdays  
9 am to 11 am

(during the school term)

Merredin College - Block 1 / Room 4



## Wondering what we do?

Are you the parent or carer of a little one aged 0-4 years? Do you live in Merredin and surrounds?

Come and join the Amity Health Kids Hub weekly playgroup, where we aim to nurture your child's growth and well-being, while providing you with support and helpful parenting tips.

Our playgroup can also connect you to other community services and programs.

### Our Amity Health Kids Hub:

- Supports children to build school readiness skills
- Promotes positive health and well-being for children
- Provides social interaction for both parent/carer and children
- Offers positive parent-child experiences through play
- Receives regular visits from one of our Child Health Nurses
- Offers regular email newsletters for parents on events and helpful parenting tips
- Assists with Kindy orientations to prepare children for kindy readiness
- Provides information for parents on play ideas at home



Providing Health & Wellbeing Solutions



## Where to find us!

Merredin College  
Block 1 - Room 4

### Contact:

Kristy - [kashwin@amityhealth.com.au](mailto:kashwin@amityhealth.com.au)  
Emma - [enicholas@amityhealth.com.au](mailto:enicholas@amityhealth.com.au)

(08) 9041 7562

[query@amityhealth.com.au](mailto:query@amityhealth.com.au)  
[www.amityhealth.com.au](http://www.amityhealth.com.au)